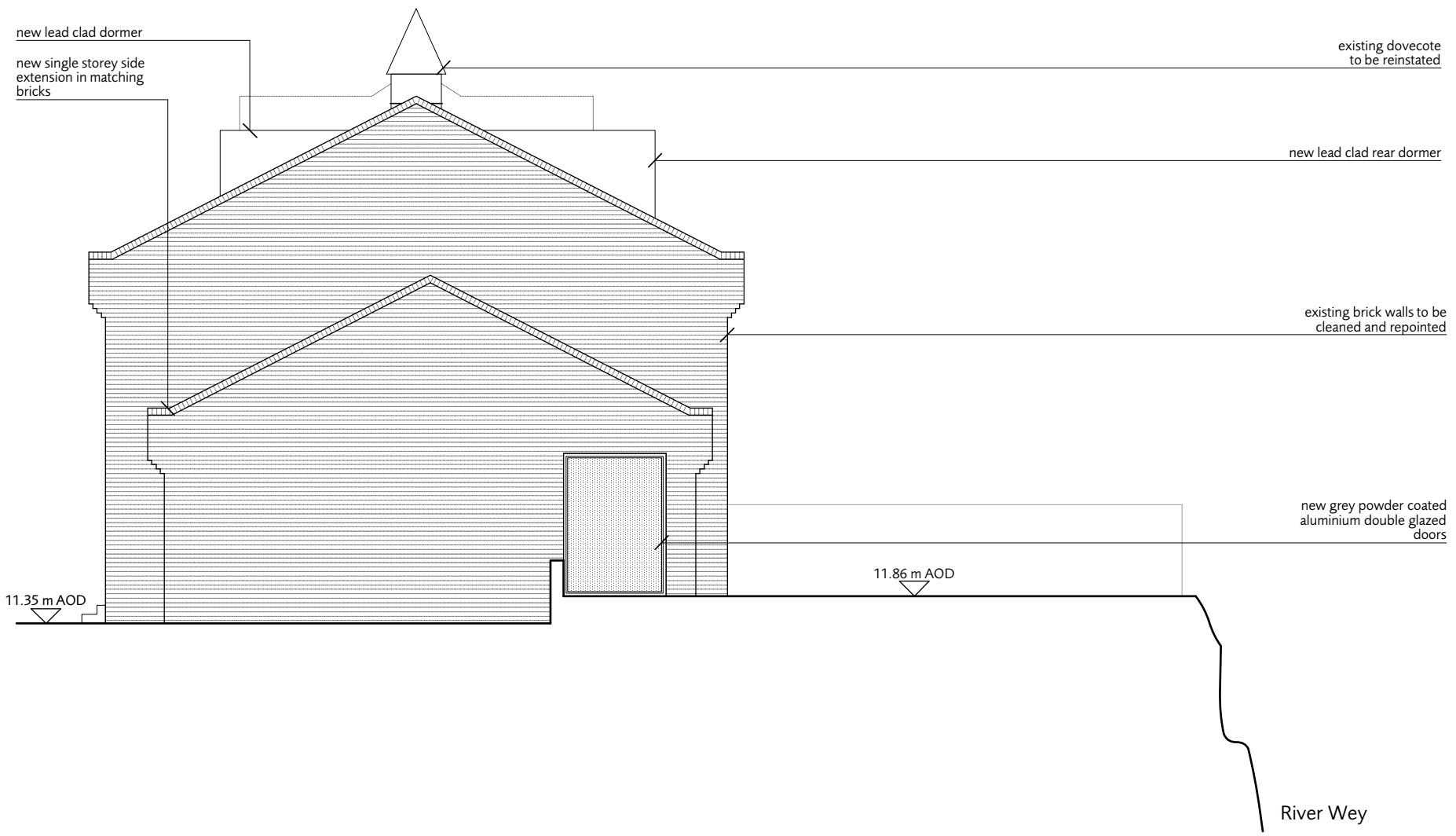


© Dols Wong Architects. This drawing may not be copied, altered or reproduced in any way or passed to a third party without their written authority. Report all discrepancies to the architect or engineers before commencing construction or fabrication. Read in conjunction with all other relevant architect and engineer drawings, schedules and specifications.



e 08.02.17
 for planning
 d 27.09.16
 pre planning
 c 17.06.16
 general revision
 b 19.10.15
 revised planning
 a 19.08.15
 revised general notes
 14.08.15

proposed side elevation	32e
-------------------------	------------

1 and 2 Riverside, Church Walk Weybridge, Surrey KT13 8JT	1302
	1:50@A2 1:100@A4

Dols Wong
architects

The Studio
61, Brondesbury Road
London NW6 6BP
44 (0)20 7372 2121 architects@dols Wong.com

