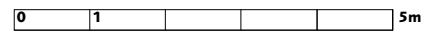
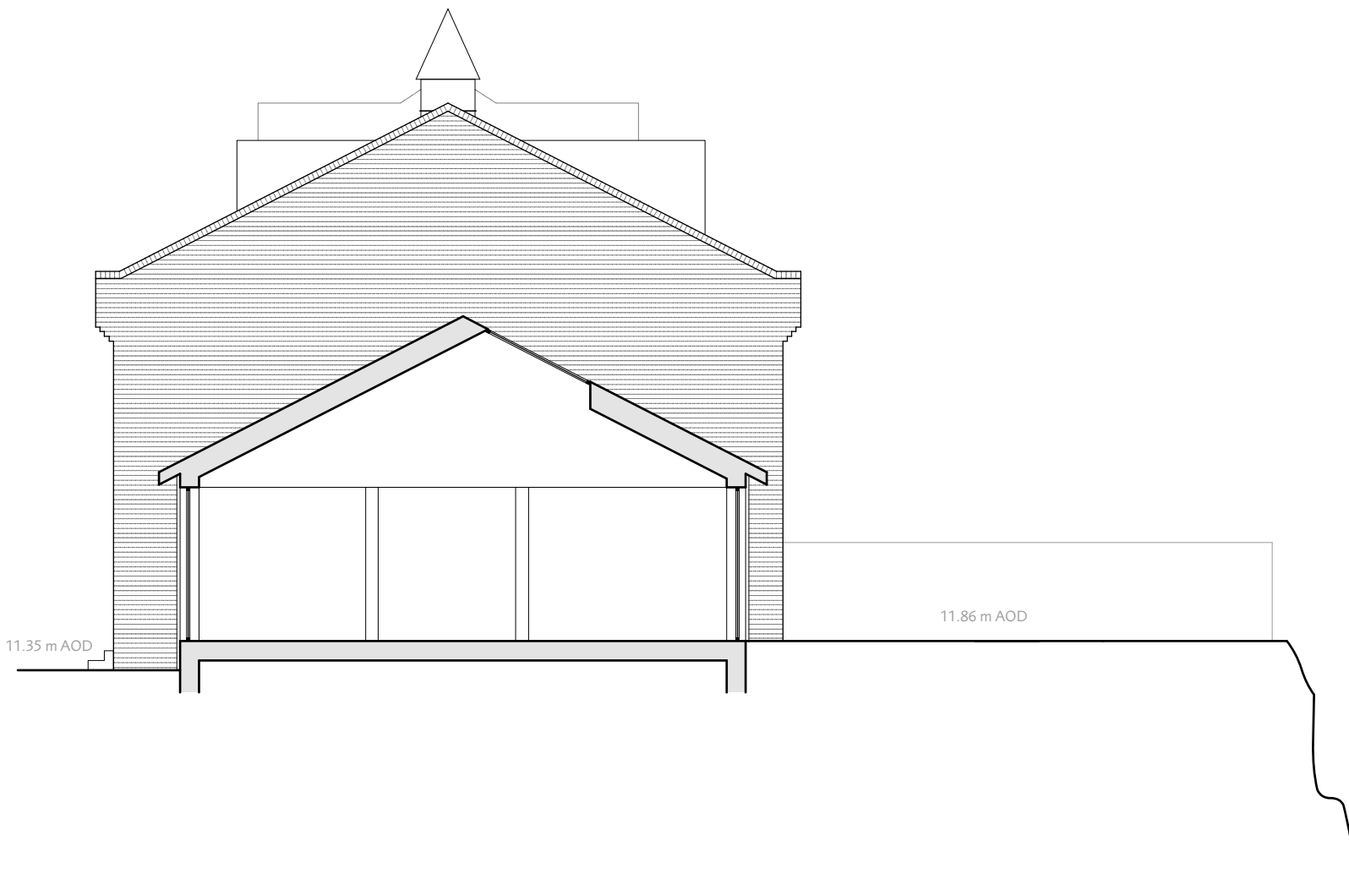


© Dols Wong Architects. This drawing may not be copied, altered or reproduced in any way or passed to a third party without their written authority. Report all discrepancies to the architect or engineers before commencing construction or fabrication. Read in conjunction with all other relevant architects and engineer drawings, schedules and specifications.



08.02.17
for planning

proposed sec CC	37
-----------------	-----------

1 and 2 Riverside, Church Walk	1302
Weybridge, Surrey KT13 8JT	1:50@A2 1:100@A4

Dols Wong
architects

The Studio
61, Brondesbury Road
London NW6 6BP
44 (0)20 7372 2121 architects@dols Wong.com