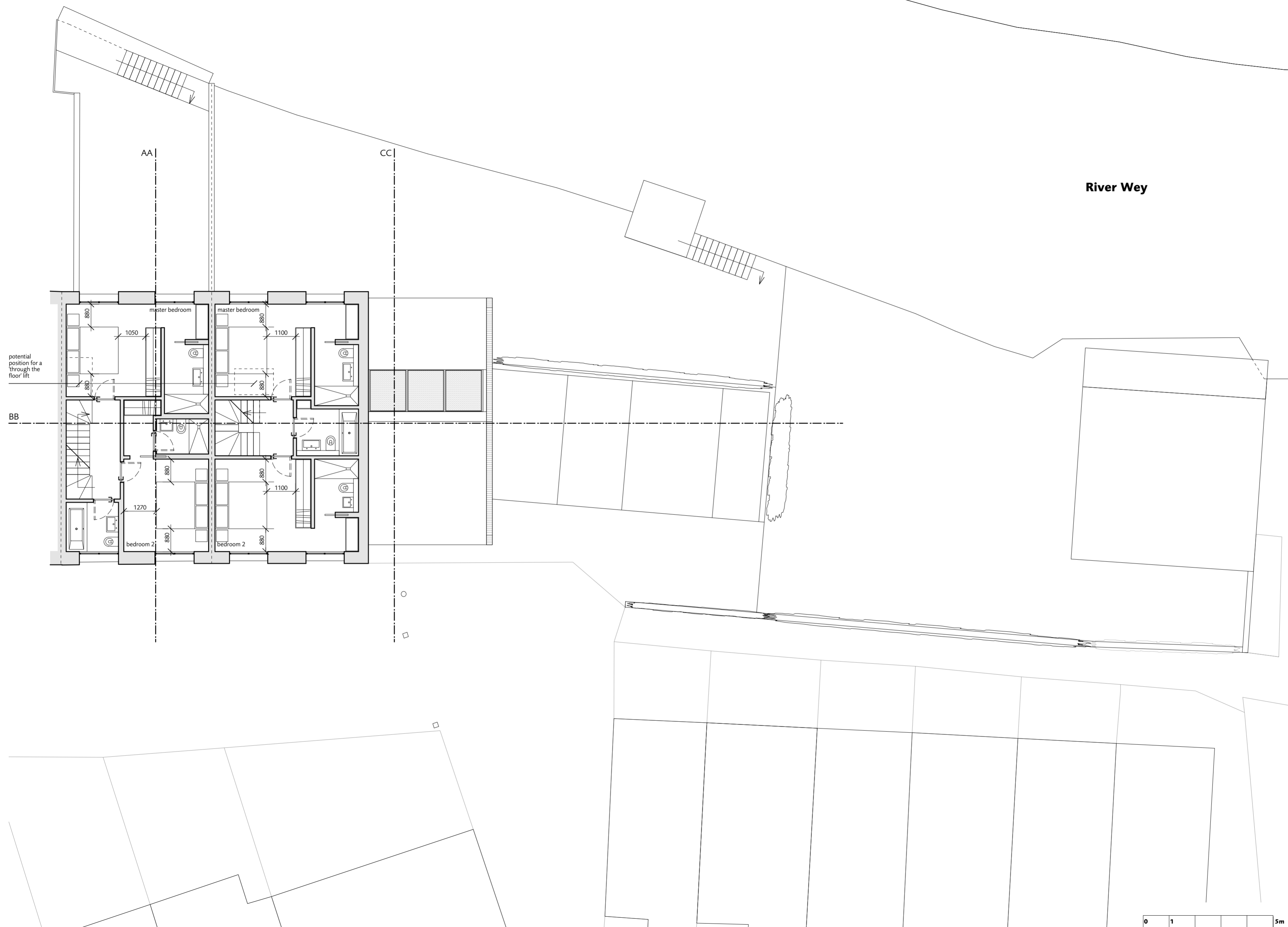


© Dols Wong Architects. This drawing may not be copied, altered or reproduced in any way or passed to a third party without their written authority. Report all discrepancies to the architects or engineers before commencing construction or fabrication. Read in conjunction with all other relevant architects and engineer drawings, schedules and specifications.



g 08.02.17  
for planning  
f 06.02.17  
general revision  
e 27.09.16  
pre planning  
d 21.09.16  
general revision  
c 08.08.16  
general revision  
b 19.10.15  
revised planning  
a 19.08.15  
revised general notes  
dimensions added  
14.08.15  
for planning

proposed plan, first floor	<b>22g</b>
<b>1 and 2 Riverside, Church Walk</b> Weybridge, Surrey KT13 8JT	1302 1:100@A2
<b>Dols Wong</b> architects	
The Studio 61, Brondesbury Road London NW6 6BP 44 (0)20 7372 2121 architects@dols Wong.com	