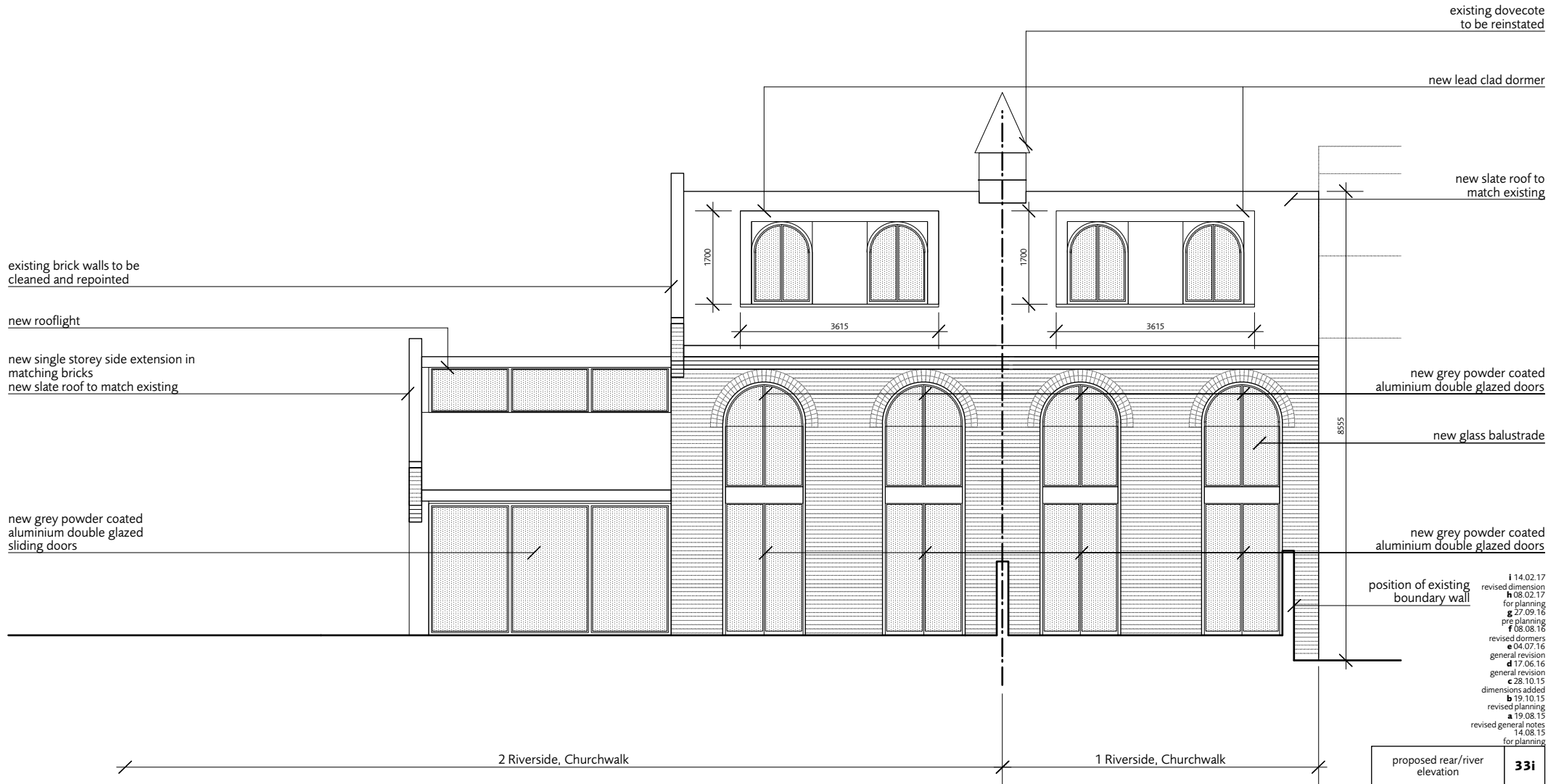


© Dols Wong Architects. This drawing may not be copied, altered or reproduced in any way or passed to a third party without their written authority. Report all discrepancies to the architects or engineers before commencing construction or fabrication. Read in conjunction with all other relevant architects and engineer drawings, schedules and specifications.



i 14.02.17 revised dimension
 h 08.02.17 for planning
 g 27.09.16 pre planning
 f 08.08.16 revised dormers
 e 04.07.16 general revision
 d 17.06.16 general revision
 c 28.10.15 dimensions added
 b 19.10.15 revised planning
 a 19.08.15 revised general notes
 14.08.15 for planning

position of existing boundary wall

proposed rear/river elevation **33i**

1 and 2 Riverside, Church Walk 1302
 Weybridge, Surrey KT13 8JT 1:50@A2 1:100@A4

Dols Wong architects

The Studio
 61, Brondesbury Road
 London NW8 6SP
 44 (0)20 7372 2121 architects@dols Wong.com

0 1 5m