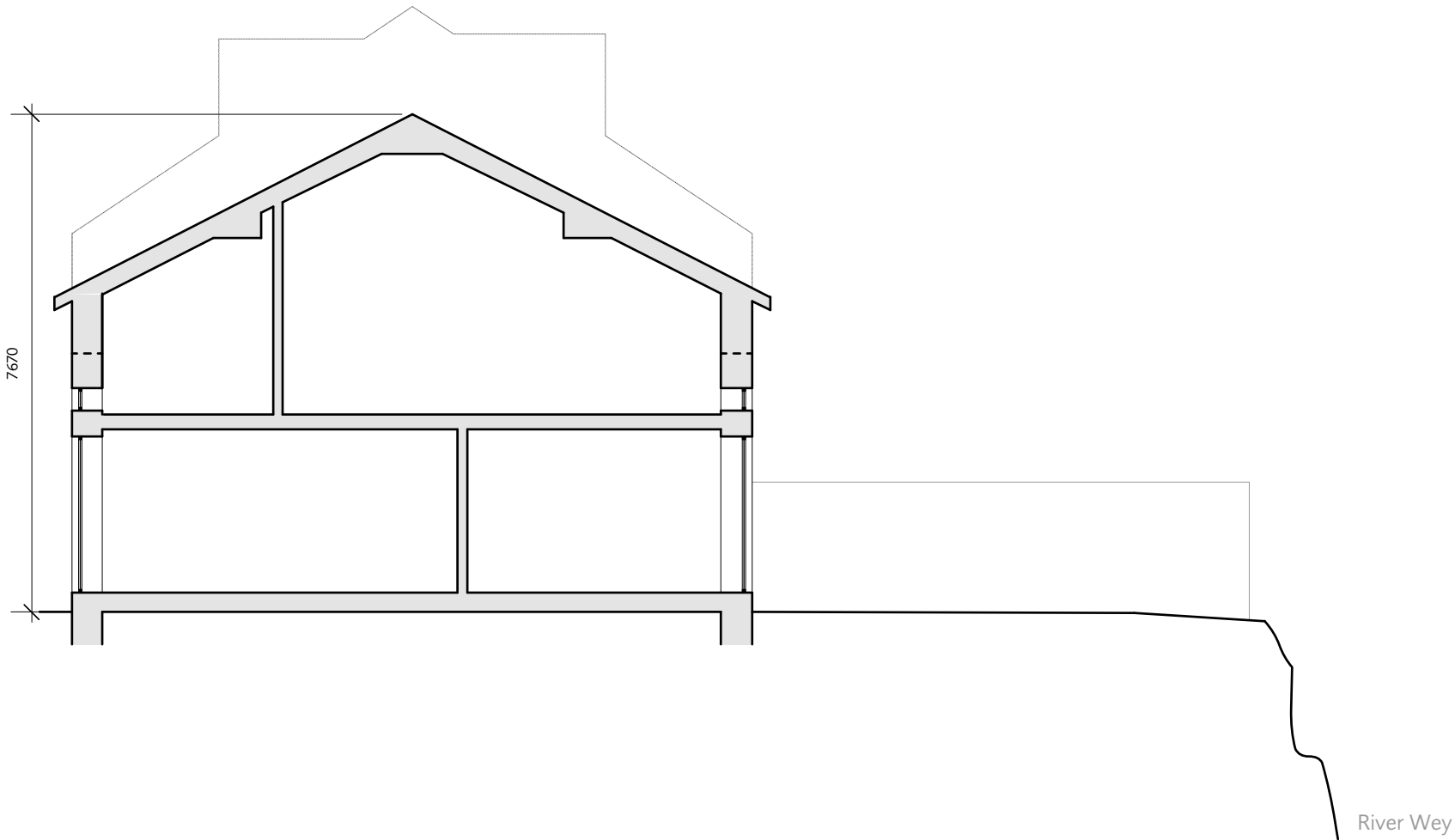


© Dols Wong Architects. This drawing may not be copied, altered or reproduced in any way or passed to a third party without their written authority. Report all discrepancies to the architects or engineers before commencing construction or fabrication. Read in conjunction with all other relevant architects and engineer drawings, schedules and specifications.



e 14.02.17
revised dimension
d 08.02.17
for planning
c 27.09.16
pre planning
b 19.10.15
revised planning
a 19.08.15
revised general notes
ridge height added
14.08.15
for planning

existing sec AA	15e
-----------------	------------

1 and 2 Riverside, Church Walk Weybridge, Surrey KT13 8JT	1302 1:50@A2 1:100@A4
---	-----------------------------

Dols Wong
architects

The Studio
61, Brondesbury Road
London NW6 6BP
44 (0)20 7372 2121 architects@dols Wong.com

0 1 5m