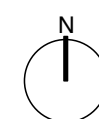


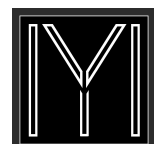
Block	Floor	Unit Ref	Unit Type	NIA sq.m	NIA sq.ft	NIA sq.m	NIA sq.ft	GIA sq.m	GIA sq.ft	1B1P	1B2P	2B3P	2B4P	3B5P	3B6P	Total
Block A	Low. Ground					0.0	0	90.0	969							
	Ground	A-G-01	3B6P	107.6	1,158	430.2	4,631	513.2	5,524						1	1
		A-G-02	2B4P	79.5	856								1			1
		A-G-03	1B2P	56.0	603						1					1
		A-G-05	2B4P	79.5	856								1			1
		A-G-06	3B6P	107.6	1,158										1	1
	1st	A-1-01	1B2P	56.0	603	448.3	4,826	515.3	5,547		1					1
		A-1-02	2B4P	79.5	856								1			1
		A-1-03	2B4P	79.5	856								1			1
		A-1-04	2B4P	74.3	800								1			1
		A-1-05	2B4P	79.5	856								1			1
		A-1-06	2B4P	79.5	856								1			1
	2nd	A-2-01	1B2P	56.0	603	324.5	3,493	373.7	4,023		1					1
		A-2-02	2B4P	97.1	1,045								1			1
		A-2-03	2B4P	74.3	800								1			1
		A-2-04	2B4P	97.1	1,045								1			1
		Sub total		1,203.0	12,949	1,203.0	12,949	1,492.2	16,062	0	3	0	10	0	2	15
										0.0%	20.0%	0.0%	66.7%	0.0%	13.3%	100.0%
Block B	Basement	B-B-01	2B4P	81.4	876	262.4	2,825	309.8	3,335				1			1
		B-B-02	2B4P	90.5	974								1			1
		B-B-03	2B4P	90.5	974								1			1
	Lower Ground	B-LG-01	2B4P	94.1	1,013	414.0	4,456	571.9	6,156				1			1
		B-LG-02	2B4P	79.5	856								1			1
		B-LG-03	2B4P	81.4	876								1			1
		B-LG-04	2B4P	79.5	856								1			1
		B-LG-05	2B4P	79.5	856								1			1
	Grd	B-G-01	2B4P	81.4	876	498.3	5,364	571.9	6,156				1			1
		B-G-02	2B4P	79.5	856								1			1
		B-G-03	2B4P	79.5	856								1			1
		B-G-04	2B4P (W)	98.9	1,065								1			1
		B-G-05	2B4P	79.5	856								1			1
		B-G-06	2B4P	79.5	856								1			1
	1st	B-1-01	2B4P	81.4	876	374.5	4,031	430.2	4,631				1			1
		B-1-02	2B4P	97.1	1,045								1			1
		B-1-03	2B4P (W)	98.9	1,065								1			1
		B-1-04	2B4P	97.1	1,045								1			1
		Sub total		1,549.2	16,676	1,549.2	16,676	1,883.8	20,278	0	0	0	18	0	0	18
										0.0%	0.0%	0.0%	100.0%	0.0%	0.0%	100.0%
Sub Total						2,752.2	29,625	3,376.0	36,340	0	3	0	28	0	2	33
Basement Parking								485.3	5,224	0.0%	9.1%	0.0%	84.8%	0.0%	6.1%	100.0%
Development Total						2,752.2	29,625	3,861.3	41,564							
Wheelchair Units		2														
Car Parking Spaces		32	(inc 3 disabled spaces)													

Please note that these drawings are for planning purposes only.
This document has been prepared for the sole use of the client.
All dimensions should be checked on site. The client should be aware of their duties under the CDM regulations

Drawing : Accommodation Schedule Scale : NTS
Drawing No. : MA212 490 Date : Dec 2022
Revision : P6



**16-18 Oatlands Drive,
Weybridge, Surrey
KT13 9JL**



MAYD ARCHITECTURE
22 Beacon Close
Farnham
Surrey
GU10 4PA
Tel : 07776 168635
daniel.may@mail.com